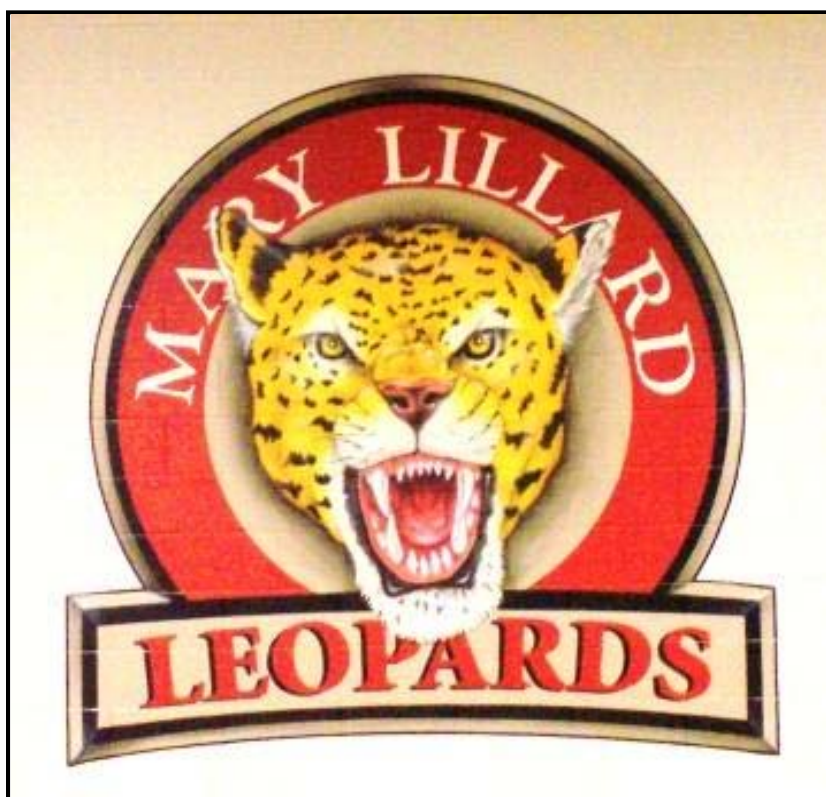


**MARY LILLARD  
INTERMEDIATE SCHOOL**

**LEOPARD BAND  
HANDBOOK  
2006-2007**



**Band Directors**

Melinda Schweig – flute, clarinet, oboe, bassoon, saxophone  
Eric Bolden – trumpet, trombone, euphonium, tuba  
Benjamin Searce – percussion

[mschweig@mansfieldisd.org](mailto:mschweig@mansfieldisd.org)  
[bolder@mansfieldisd.org](mailto:bolder@mansfieldisd.org)  
[sceabe@mansfieldisd.org](mailto:sceabe@mansfieldisd.org)

1301 Day Mir  
Mansfield, TX 76063  
(817) 276 - 6260

## Leopard Band Philosophy

Welcome to the MLIS Leopard Band! It is with pride and enthusiasm that we introduce the band program to you. We are excited that you have chosen to become part of this excellent organization.

The success of any organization is dependant on the spirit, pride, teamwork, dedication and cooperation of its members. Certain rules, policies and procedures are necessary so that the overall goals of the group are met and the welfare of each individual member is best served. The purpose of this handbook is to familiarize each member and their parents with: (1) the general operations and procedures of the Leopard Band, including grading and performance expectations, and (2) the standards by which all band members are expected to conduct themselves.

By accepting membership in the Leopard Band, you agree to perform to the best of your abilities and work together with all the members of the band in making this year's band the finest musical organization that we can be. We do not expect every band member to be a virtuoso player and performer, but what we do expect is for all members to give it their 100% effort – every time, all the time!

**As you sign the forms at the end of this handbook you will be making a commitment that includes:**



- Being a member of the band for the entire school year
- Giving your best effort to improve as a musician
- Maintaining a progressive, positive attitude toward band and school throughout the year

## Leopard Band Basics

The Leopard Band is divided into like-instrument classes for the purpose of teaching the basic fundamentals of playing a band instrument. Throughout the year, students will work to complete a predetermined set of **Objectives** that demonstrate good tone production, technical skills, musical expression, and knowledge of basic music theory. The band will perform a concert at the end of each semester, and several school assemblies for the MLIS student body and teachers. Additionally, all Leopard Band students will have the opportunity to participate in the **Solo & Ensemble Contest** and the **Sandy Lake Band Festival**, both in the spring semester. Our goal this year is to provide each band student the necessary knowledge and experience to be successful in band during middle school and beyond.

## Leopard Band Uniform

Our band uniform consists of a Leopard Band T-shirt, blue jeans, and tennis shoes. Every band student is required to purchase a Leopard Band T-shirt at the start of the year. This T-shirt is specially designed each year for our band, with our band logo on the front and every member's name on the back. See Page 11 of this handbook for an order form.

## Leopard Band Performances

**Attendance at all performances and at all pre-scheduled rehearsals is required.**

**An unexcused absence from a performance will result in a "0" as a test grade.**

Concerts are extensions of the classroom and are the highlight of the learning process. Excuses are accepted only in the event of illness with doctor's note, or a major family emergency. A phone call or a note from parent to director is expected for a missed rehearsal or performance. The rehearsal or concert may or may not be excused at the discretion of the director.

***Please note that non-school sponsored athletic events will not be excused.***

## Leopard Band Calendar of Events



<b>Date</b>	<b>Event</b>	<b>Time</b>	<b>Location</b>
October 24	Fall Preview Concert	7:00 p.m.	MLIS Cafeteria
December 12	Winter Concert	7:00 p.m.	MLIS Cafeteria
Saturday, March 31 (tentative date)	Solo and Ensemble Contest	* SATURDAY * contest runs from 8:00 am – 3:00 pm during school	t.b.a. at one of the MISD Intermediate Schools
Week of April 16 or 23	Rehearsals for Sandy Lake Contest	during school	MLIS Cafeteria
Week of April 16 or 23	Sandy Lake Band Contest	during school	Sandy Lake Amusement Park
April – May (t.b.a.)	Middle School Band Auditions	during school	MLIS Band Hall
Week of May 1	Rehearsals for Spring Concert	during school	MLIS Cafeteria
Week of May 7 or 14	Spring Concert	7:00 p.m.	Location t.b.a. – either MLIS Cafeteria or Willie Pigg Auditorium

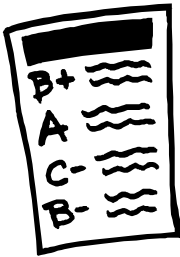
*The above dates are subject to change. Information regarding specific dates will be forthcoming as it becomes available.*

## Leopard Band Practice Card

The Practice Card is designed to help students establish an organized routine for daily practice and is also an integral part of their grade. The practice card is not needed to be able to tell whether one has practiced or not! How students improve from day to day and week to week reveals that fact. Honesty is the best policy concerning recording practice time. Parents must be involved in the student's practice and progress for success. Parent encouragement and support is very important.

### **Practice Card Guidelines:**

1. Record the total number of minutes, not hours per week. The minutes required to receive a grade of 100% on the Practice Card will increase throughout the year as assignments become more demanding.
2. A Parent/Guardian must sign the card for a grade. Cards may not be signed in advance of the week.
3. Cards are turned in every Monday. 10 points will be deducted for each day late through Friday.
4. All time spent playing outside of class may be counted on your practice card. For example, private lessons, rehearsals and concerts.



## Leopard Band Grading Policy

Six Weeks band grades will be determined using the following criteria:

- 40 % – Tests, written theory & performances
- 40 % – Daily Participation
- 20 % – Practice Record Grade
- Conduct Grade – E, S, N, U

- 40% of the band grade is determined by playing and written tests; and punctuality and attendance at rehearsals at concerts.

An unexcused absence from a performance will result in a “0” (zero) as a test grade.

- 40% of the band grade is determined by class participation. This consists of bringing instrument, music, pencil, and other required supplies to class, being on time to class, and participating in class activities.

Classroom participation will be accounted for in the following way: each possible day of class is worth 20 points. If a student is participating appropriately they will receive the full 20 points. If the student is not participating appropriately, the student will be given one warning, and after that, given a zero in participation for that day. At the end of the grading period, the days are totaled and the number of points possible determined to get a participation average for each student. This grade is given a weight of 40% and averaged with the test grade and practice card average for the regular grade.

**IMPORTANT** – A deduction of 5 points will be taken from a student’s daily grade each time the student forgets to take their instrument home and any time a student comes to class missing any of the required materials for class. However, if the student’s instrument is in the repair shop, points will not be deducted as long as a written note from a parent is received.

Appropriate behavior is defined as follows:

1. The student has all required music & supplies necessary for class.
2. The student is making a reasonable effort to perform the music that has been assigned in class and to do what the teacher asks of them.
3. The student is listening to instructions and is not preventing others from listening to instructions.

- 20% of the band grade is determined by the **weekly** Practice Card grade. (see guidelines above)
- Citizenship grades, (E, S, N, U) will be given in band as in other academic subjects and are a reflection of your child’s behavior and attitude in the classroom and during performances.

### General Classroom Conduct Guidelines:

- Proper respect will be shown to the director and peers at all times.
- Proper care will be shown with all school-owned material. (instruments, music, other equipment, etc.)
- Teacher expectations are for quiet and orderly classes, rehearsals, and performances.
- Students are to play their instrument only when directed by the teacher.
- Students are not to touch or play another student’s instrument.
- Running, horseplay, or any such activity is prohibited at all times in the band hall.

### Consequences for not following these guidelines are as follows:

1. 1<sup>st</sup> occurrence: Personal verbal warning.
2. 2<sup>nd</sup> occurrence: Removal from class/rehearsal/performance (*will result in a discipline signing*).
3. 3<sup>rd</sup> occurrence: Conference with parent and directors; Discipline Referral to Administration.
4. Subsequent: Removal from organization if deemed necessary by parent and director conference.

## A Brief Practice Guide for Parents and Students

### When to Practice:

1. Approximately the same time every day in 20-30 minute intervals.
2. At a time when the student is physically and mentally alert.
3. At a time when there will be the least amount of distractions.

Practicing at the same time every day will help establish a set routine. Also, there are fewer interruptions if both family and friends know that a certain time has been set aside for practicing.

### Where to Practice:

1. In a place as free from distraction as possible from TV, phone, stereo, other people, etc...
2. In a room that is neither too "live" or "dead" acoustically.
3. In a place where the student feels comfortable.

### Equipment:

1. A chair with a straight back and no arms. (No sitting on beds, please!)
2. A music stand.
3. A mirror.
4. A metronome and tuner, if available.
5. A computer, if available.

In order for the student to develop good posture, it is important for a quality chair and a music stand to be provided. The mirror is for viewing hand, embouchure, and body position. The metronome will develop and reinforce good rhythm and pulse while a tuner will help students develop a characteristic, in-tune sound. The band method book, *Standard of Excellence*, is enhanced with a computer component, including recording capabilities. Students will be trained on using the computer component during the first few weeks of school.

### What to Practice:

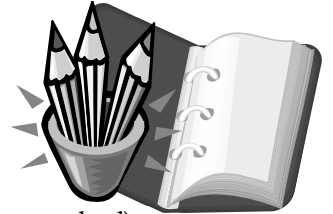
1. Warm-up materials - long tones, slurs, scales, exercises, etc.
2. Class assignments – method book, band pieces, test material, etc.
3. Private lesson music - assigned by the private lesson teacher.
4. Sightreading – Play unfamiliar music from sight using an etude or song book.
5. Student-choice music - play "fun" music for enjoyment (popular music, Disney favorites, etc).



## Leopard Band Required Supplies

Band students will need the following supplies in addition to their instrument and instrument accessories:

- Wind/Brass Method books: *Standard of Excellence Book 1 and Book 2* (sold at local music stores)
- Wind/Brass Theory book: *Alfred Publishing: Essentials of Music Theory* (sold at local music stores)
- 1 1/2" – 2" **black hardcover** 3-ring binder, with pockets
- 5 binder dividers (so that we can organize binders into different sections)
- pencil pouch
- 5 sharpened pencils
- name tag for case, with name and phone number clearly identified
- band shirt - to be worn during band concerts & functions (see T-shirt order form attached)



The following items are optional, but highly recommended.

- \* music stand (to be kept at home for home practice)
- \* metronome – (to be kept at home for home practice)
- \* tuner – (to be kept at home for home practice) *oboe and bassoon players are required to have a tuner*

**Check at local music stores for a combination metronome/tuner - a great value!**

## School-owned Instruments

A limited number of the more expensive band instruments are owned by MISD for the purpose of balancing the instrumentation district-wide and maintaining performing bands at every level. These instruments include oboe, bassoon, french horn, euphonium, baritone, and tuba. There is a yearly non-refundable maintenance fee of **\$40.00** for each student playing a school-owned instrument which is due at the start of each school year. This fee is used to offset the cost of yearly maintenance done each summer. Please note that this \$40.00 fee does not cover damage by misuse or "accidents" – fault or no-fault. Students using school-owned brass instruments (french horn, euphonium, baritone and tuba) will be required to purchase a mouthpiece, separate from this fee.

**IMPORTANT!** Students are responsible for any loss or damage caused through *neglect* or *misuse* of school-owned property. School instruments are issued to students with the understanding that the instrument will be returned to the school in the same condition in which it was issued. Periodic inspections of school equipment will be made throughout the year to insure proper care and operation. There will be a charge to repair any damage to a school-owned instrument.

Mansfield ISD **is not responsible** for any **lost or stolen** instrument while on the school premises. We recommend that you check with your insurance agent to determine if your child's school-owned instrument is covered by your home-owner or renter's insurance.

**The Instrument Check-out form on page 12 of this handbook is for parent/guardian signature, which describes the condition of the instrument and outlines the policies for school-owned instruments.**

## Recommended Instruments and Required Supplies

INSTRUMENT	BRAND/MODEL	MOUTHPIECE	SUPPLIES	METHOD BOOK	THEORY BOOK
Flute	Model- Yamaha-YFL 261S or 361H w/offset G Pearl- 505RE Open-hole w/offset G and split E plastic or cork hole plugs		Cotton handkerchief, Cleaning rod, metronome/tuner & wire music stand	<i>Standard of Excellence, Books I &amp; II for Flute</i> * Enhanced Edition	Alfred Publishing <i>Essentials of Music Theory Book 1</i>
Oboe	Provided by the school		3 Jones reeds of medium strength, reed case, silk cleaning swab, metronome/tuner & wire music stand	<i>Standard of Excellence, Books I &amp; II for Oboe</i> * Enhanced Edition	Alfred Publishing <i>Essentials of Music Theory Book 1</i>
Bassoon	Provided by the school		3 Jones reeds of medium strength, reed case, silk cleaning swab, mirror, metronome/tuner & wire music stand	<i>Standard of Excellence, Books I &amp; II for Bassoon</i> * Enhanced Edition	Alfred Publishing <i>Essentials of Music Theory Book 1</i>
Clarinet	Buffet E11 Buffet B12 LeBlanc - Noblet LeBlanc - Normandy	Van Doren 5RV Lyre, or Fobes "Debut" mouthpiece Rovner ligature	10 Van Doren #2 1/2 reeds, 1 reed guard, cork grease, swab, mouthpiece patches, metronome/tuner & wire music stand	<i>Standard of Excellence, Books I &amp; II for Clarinet</i> * Enhanced Edition	Alfred Publishing <i>Essentials of Music Theory Book 1</i>
Alto Saxophone	Yamaha YAS23	Selmer C *, Selmer ligature	10 Van Doren #2 1/2 reeds, neck strap, cork grease, 1 reed guard, swab, metronome/tuner & wire music stand	<i>Standard of Excellence, Book I for Alto Saxophone</i> * Enhanced Edition	Alfred Publishing <i>Essentials of Music Theory Book 1</i>
Cornet	Yamaha YCR2310 TH Bach CR 300 King 603 Getzen Capri	Bach 5C or 7C Bach 5C or 7C Bach 5C or 7C	Slide grease, mouthpiece brush, Al Cass valve oil, cleaning snake, metronome/tuner & wire music stand	<i>Standard of Excellence Book 1 for Cornet</i> * Enhanced Edition	Alfred Publishing <i>Essentials of Music Theory Book 1</i>
French Horn	Provided by the school	Farkas MDC	Valve oil, mouthpiece brush, cleaning snake, slide grease, metronome/tuner & wire music stand	<i>Standard of Excellence Book 1 for French horn</i> * Enhanced Edition	Alfred Publishing <i>Essentials of Music Theory Book 1</i>
Trombone	Yamaha YSL354 King 606-K Benge 165F Bach TB 200 Conn 52H	Bach 6 1/2 AL Bach 6 1/2 AL Bach 6 1/2 AL	Super slick kit or Slidomix kit, spray bottle, cleaning snake, Selmer tuning slide grease, mouthpiece brush, metronome/tuner & wire music stand	<i>Standard of Excellence Book 1 for Trombone</i> * Enhanced Edition	Alfred Publishing <i>Essentials of Music Theory Book 1</i>
Euphonium/ Baritone	Provided by the school	Bach 6 1/2 AL Bach 5G Tenor shank	Mouthpiece brush, cleaning snake, Al Cass valve oil, slide grease, metronome/tuner & wire music stand	<i>Standard of Excellence Book 1 for Baritone (Euphonium)</i> * Enhanced Edition	Alfred Publishing <i>Essentials of Music Theory Book 1</i>
Tuba	Provided by the school	Bach 18 Conn 120S Heleburg	Mouthpiece brush, mouthpiece pouch, rotary oil, slide grease, metronome/tuner & wire music stand	<i>Standard of Excellence Book 1 for Tuba</i> * Enhanced Edition	Alfred Publishing <i>Essentials of Music Theory Book 1</i>
Percussion	Rogers, Firth, or Pearl percussion kit		Stick bag *	<i>A Fresh Approach to Snare Drumming</i> by Mark Wessels	

You can rent or buy instruments, supplies, and method books at:

- Brook Mays Music Company, in Arlington  
Located immediately south of I-20 on Cooper Street  
(817) 649-0110
  - Rivard Brothers Music  
Located in Arlington, on Bowen Rd. and Arkansas St.  
(817) 459-BAND
- Mr. E's Music, in Arlington  
soon to be located on Arbrook Rd, just West of Cooper St.  
(817) 419-0353

All the above music stores also do repairs and can evaluate an instrument before purchase.  
For discount prices online check out - The Woodwind & Brasswind Music Company ([www.wwbw.com](http://www.wwbw.com))



## Eligibility Requirements, a.k.a. “No Pass – No Play”

For participation in some of the scheduled band activities this year, students must meet eligibility requirements in accordance with T.E.A. (Texas Education Association) and U.I.L. (University Interscholastic League) rules. These two extra-curricular activities are the **Sandy Lake Band Funfest** and the **Solo & Ensemble Contest**, both which take place in the spring semester. These rules are often referred to as “No Pass – No Play”, and they apply to all extra-curricular activities throughout a student’s school career, including school-sponsored athletic activities and band. Band programs throughout the state are bound by law to follow these rules from grades 6 - 12.

The “No Pass – No Play” rules state that a student must pass every course on a given Report Card with at least 70%, in order to be eligible for extra-curricular activities occurring during the **following six-weeks**. A student who is determined to be ineligible may **regain** eligibility by meeting the previous requirements at the 3<sup>rd</sup> week point of the following Six Weeks. Semester grades are never used for eligibility. Students will be notified of their eligibility status by their teacher in a timely-manner before a “No Pass – No Play” event.

Additionally, the Leopard Band has a policy that students must receive a conduct grade of “E” or “S” in their band class the previous Six Weeks to reach eligibility status. A student who is assigned to Alternative Campus (A.C.) on the day of a U.I.L. event may or may not be able to attend the event at the discretion of the MLIS Principal or Assistant Principal.

***Note: Ineligible students are not allowed to participate in performance or travel with the band at T.E.A. /U.I.L. sponsored events.***



### Private Lessons



The Mansfield ISD Band Program offers private instruction from some of the finest professional musicians in the DFW area. Private lessons are offered as enrichment, not as remedial instruction. As a general rule, those students who take private lessons become leaders in the band due to the individualized instruction they receive from our private lesson staff. We highly recommend private lessons for the complete development of each student’s potential as a musician, but they are not required.

Lessons are 30 minutes in length and are taken once a week during band class or before or after school. However, lessons that are taken during class may be several minutes shorter due to the length of the class period. The cost for the 30 minute lesson is \$16.00.

For more information about private lessons, including names and contact information of our private lesson teachers, please check out the MISD band website at [www.mansfieldisd.org/fine\\_arts/finearts.htm](http://www.mansfieldisd.org/fine_arts/finearts.htm). This website is updated throughout the year with current lesson teachers, phone numbers and email information. A list of our current private lessons teachers is provided on page 13 of this packet. **You may contact a teacher directly to set up lessons.**

The instructors listed on the above mentioned web page are considered to be on our “Approved Teachers List” and each have been selected by an interview and audition process which includes a complete background check. Only these teachers may teach in our school facilities. These teachers are not employed by MISD, but are rather independent contractors, most of whom make their living completely through teaching private lessons.

*Each year the Mansfield Band Boosters provide financial assistance to those students who want to take private lessons but are unable to afford them. Ask for a Financial Assistance form if interested.*

# MLIS Leopard Band



## Information & Medical Release Form 2006 - 2007

Student's Last Name \_\_\_\_\_ First Name \_\_\_\_\_

Instrument \_\_\_\_\_ Make/Brand \_\_\_\_\_

Model \_\_\_\_\_ Serial # \_\_\_\_\_ (a 4-7 digit number inscribed on the instrument)

Home Mailing Address \_\_\_\_\_

City \_\_\_\_\_ Zip \_\_\_\_\_ Home Phone ( ) \_\_\_\_\_

Mother's First and Last Name \_\_\_\_\_

Mother's Work Phone ( ) \_\_\_\_\_ Cell ( ) \_\_\_\_\_

Father's First and Last Name \_\_\_\_\_

Father's Work Phone ( ) \_\_\_\_\_ Cell ( ) \_\_\_\_\_

Parent email address (one that is checked regularly) \_\_\_\_\_

Please list below any medical condition we should be aware of (including allergies):

\_\_\_\_\_

List below any medication that your child is currently taking or will take:

\_\_\_\_\_

Name and number of your family doctor \_\_\_\_\_

Emergency Contact (not parent) \_\_\_\_\_ Phone # ( ) \_\_\_\_\_

***I do hereby give Melinda Schweig and/or Eric Bolden, or their designees, the authority to seek medical attention for the above named student in the event of an emergency or in any situation that requires medical attention.***

\_\_\_\_\_  
Parent / Legal Guardian Signature Date

***We have read the Leopard Band Handbook and our child has permission to participate in band and all band activities within the guidelines as stated.***

\_\_\_\_\_  
Parent / Legal Guardian Signature Date

***I have read the Leopard Band Handbook and agree to abide by all the policies stated.***



\_\_\_\_\_  
Student Signature Date

# Parent's Permission Release and Indemnity for Field Trips

I hereby certify that my son/daughter, \_\_\_\_\_(name) has my permission to participate in field trips with the MARY LILLARD INTERMEDIATE SCHOOL BAND during the 2006-2007 school year.

To the best of my knowledge he/she is physically fit to engage in such activity and is not suffering from any disease or injury.

I agree and do hereby waive and release all claims against the Mansfield Independent School District and any teacher, employee or other person engaged in the activity in question and agree to hold them harmless from any and all liability relating to my son/daughter for any personal injury or illness that may be suffered or any loss of property that may occur.

I understand that reasonable measures will be taken to safeguard the health and safety of my son/daughter and that I will be notified in the case of an emergency. In the case of an accident or sickness, I authorize the calling of a doctor or the providing of other medical services.

**It is understood that no child will be allowed to participate in any activity until this form is signed by his/her parent/guardian.**

Signed at \_\_\_\_\_, Texas, this \_\_\_\_ day of \_\_\_\_\_, 2006.  
(location)



Signature of Parent/Guardian \_\_\_\_\_

Home Phone # \_\_\_\_\_

Work # \_\_\_\_\_

Cell # \_\_\_\_\_

Parents/Guardians:

Please circle the activity or activities in which you would like to participate:

Chaperone                      Fundraising                      Publicity/Communications

# MLIS Leopard Band



## Band T-Shirt Order Form 2006 - 2007

The MLIS Leopard Band T-shirt will be worn at most band performance during the year. Band students can also wear their Band T-shirts during the year as everyday wear. You can even purchase one for yourself to show your support for the Leopard Band!

*Financial assistance for purchasing a Band T-shirt is available for those students who request it.*

Please turn in the order form below along with your money in a *sealed envelope* to your band director no later than **Friday, September 22.**

The cost for this year's T-shirt will be \$15.00.

Please write the following information clearly on the envelope:

- student's first and last name
- amount enclosed

*Detach below and return to your band director.*

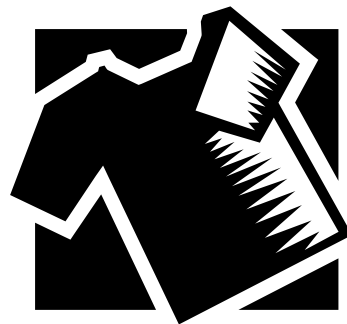
# MLIS Leopard Band



Student Name \_\_\_\_\_ Instrument \_\_\_\_\_

**All sizes below are ADULT SIZES. T-Shirts are \$15.00 each.  
Enclose cash or make checks payable to "MLIS Band"**

Size	Quantity	Cost
Adult S		
Adult M		
Adult L		
Adult XL		
Adult XXL		
	Total \$ due	\$



For office use:

Date paid	Amount	Cash?	Check #?

Student Name \_\_\_\_\_ Grade \_\_\_\_\_

## School-owned Instrument Check-out Record

For oboe, bassoon, bass clarinet, tenor & bari sax, french horn, euphonium and tuba **ONLY**

Instrument	
Brand/Model	
Serial Number	
Accessories on loan from school	
Condition at time of check out (list dents, scratches, lacquer finish)	

School-owned instruments are issued to band students who play oboe, bassoon, french horn, euphonium, baritone, and tuba at the beginning of each school year. At the end of the 1<sup>st</sup> semester, bass clarinet, tenor saxophone and baritone saxophone will be issued to those students chosen to play these instruments.

Mary Lillard students who play school-owned instruments will pay a yearly non-refundable usage fee of **\$40.00**. (2<sup>nd</sup> semester borrowers only: **\$20.00**) Fees are standard to MISD; however middle school and high school fees vary due to levels of usage. **Students and their parents are responsible for paying for any damages or repair work (other than normal wear and tear or any condition listed above) done to school instruments or equipment during the course of the year.**

All school owned instruments will be returned to the MLIS band directors at the end of the school year.

Responsibilities of the individual using a school owned instrument are:

1. Purchase your own mouthpiece and supplies.
2. Keep instrument and case in good condition.
3. Brass players – oil brass valves, keep brass slides in working order.
4. Woodwind players – swab out instrument after each use, remove reeds from mouthpiece after each use.
5. Latch all latches on cases.
6. Do not store anything besides instrument and small instrument accessories in case.
7. Treat the instrument as though it belongs to you personally!

**I have read the above and approve of all conditions and responsibilities that apply.**

Student signature \_\_\_\_\_

Parent signature \_\_\_\_\_

Date \_\_\_\_\_



**Please make your checks payable to “Mary Lillard Band.”**

For office use:

Date paid	Amount	Cash?	Check #?

## Mansfield ISD Private Lesson Program

One of the most important factors in a band program is the development of the individual player. We strongly encourage private lessons as a means for you to be more successful on your instrument. Our private teachers are carefully interviewed and selected by our high school directors. *With few exceptions, the students in our intermediate school band classes who are the most successful are those who are actively involved in our private lesson program.*

Lessons are 25-30 minutes once a week at a cost of \$16.00 per lesson. If teaching schedules permit, private lessons are taught during band class. Otherwise, private lessons are taught before or after school. We have an excellent staff of private teachers; and we hope that you will seriously consider taking part in this program. The more students that take private lessons, the better our bands will be! To enroll, fill out the bottom of this sheet and return to your band director, *or* call the private teacher on your own. Private teachers fill up fast, so CALL NOW! Check [www.mansfieldisd.org/fine\\_arts/finearts.htm](http://www.mansfieldisd.org/fine_arts/finearts.htm) for an up-to-date listing of the MISD private lesson teachers.

Instrument	Name	E-Mail Address/Phone	Phone
Bassoon	Lucy Bartholomee	bartlu@mansfieldisd.org	(817) 572-5669
Clarinet	Lori Danielson	loridanielson@yahoo.com	(817) 453-1418
Clarinet	Holly Klindt	htklindt@yahoo.com	(682) 559-1411
Clarinet/Flute	Ellen Kaner	ekaner@aol.com	(817) 467-5784
Clarinet/Saxophone	Keith Davis	coolhtml@hotmail.com	(817) 456-2658
Euphonium/Trombone	Robert Garcia	rmgarcia1959@yahoo.com	(817) 229-3284
Flute	Jennifer Hunter	flautenmusik@hotmail.com	(817) 261-1785
Flute/Clarinet	Ellen Kaner	ekaner@aol.com	(817) 467-5784
Flute	Alice Bennett	Flutecila4@sparnet.net	(817) 478-4478
French Horn	Julia Erdmann	jerdwomann@hotmail.com	(469) 358-2838
French Horn	Josh Davis	Fr3nchHorn@gmail.com	(817)368-3833
French Horn	Janet Boyce	embouchure@att.net	(817) 319-2244
Oboe	Janette Hayhurst	jannettehayhurst@hotmail.com	(817) 790-8756
Saxophone	David Wade	d_wade@sbcglobal.net	(817)994-3394
Saxophone/Clarinet	Keith Davis	coolhtml@hotmail.com	(817) 456-2658
Trombone/Euphonium	Robert Garcia	rmgarcia1959@yahoo.com	(817) 229-3284
Trumpet	Jeffrey Norman	jnorm78@hotmail.com	(940) 206-8259
Tuba	Vurl Bland III	vurltuba@sbcglobal.net	(817) 233-8920

*Detach below and return to your band director.*

\_\_\_\_\_ Yes, I am interested in Private Lessons. Please contact me!

Student Name \_\_\_\_\_ Instrument \_\_\_\_\_

Parent Name \_\_\_\_\_ Home phone \_\_\_\_\_

Cell# \_\_\_\_\_ Work # \_\_\_\_\_

Parent email address \_\_\_\_\_

Preferred Private Lesson Teacher \_\_\_\_\_