

**MISD TAKS Multi-year Performance**  
 Percent Passing Summed Across Grade Levels\*  
 "Panel Recommendation Standard"



Reading/ELA		State	MISD	Afr. Americans	Hispanics	Whites	SPED	ED	LEP
	2003**	72	81	72	71	86	53	67	39
	2004	80	86	79	78	90	60	76	46
	2005	83	88	83	82	92	67	80	58
	2006	87	92	88	86	95	78	85	66
Difference	2003 to 2006	15	11	16	15	9	25	18	27

Math		State	MISD	Afr. Americans	Hispanics	Whites	SPED	ED	LEP
	2003	59	68	53	56	75	42	56	39
	2004	66	73	57	63	79	45	60	44
	2005	71	79	66	71	85	55	68	57
	2006	75	80	68	73	86	63	69	65
Difference	2003 to 2006	16	12	15	17	11	21	13	26

Writing		State	MISD	Afr. Americans	Hispanics	Whites	SPED	ED	LEP
	2003	79	88	79	78	92	70	76	45
	2004	89	94	94	89	94	76	88	60
	2005	90	95	94	92	96	88	90	80
	2006	91	96	93	94	97	93	92	86
Difference	2003 to 2006	12	8	14	16	5	23	16	41

Science		State	MISD	Afr. Americans	Hispanics	Whites	SPED	ED	LEP
	2003	41	48	30	31	56	19	27	11
	2004	56	62	42	42	71	29	39	10
	2005	63	68	51	55	77	35	51	17
	2006	70	73	57	59	83	42	56	28
Difference	2003 to 2006	29	25	27	28	27	23	29	17

Soc. Studies		State	MISD	Afr. Americans	Hispanics	Whites	SPED	ED	LEP
	2003	75	85	76	73	89	62	74	39
	2004	84	90	86	82	92	60	80	52
	2005	87	91	89	84	94	65	84	39
	2006	87	91	87	85	95	69	82	60
Difference	2003 to 2006	12	6	11	12	6	7	8	21

Data source: AEIS Rpts

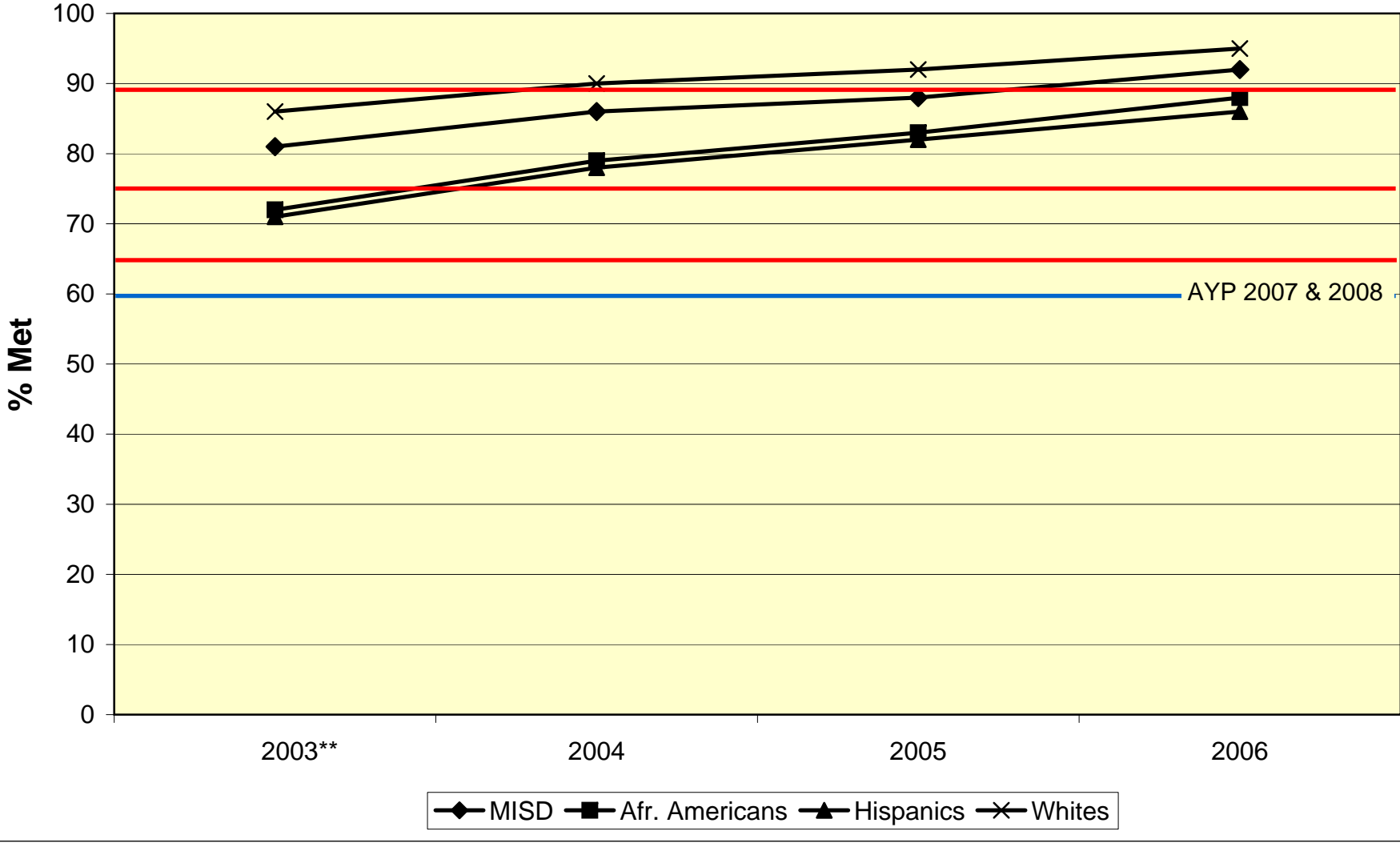
\* Sum of All Grades Tested Excluding Gr. 8 Science

\*\* AEIS 2004 Rpt

REVISED: 01/02/07

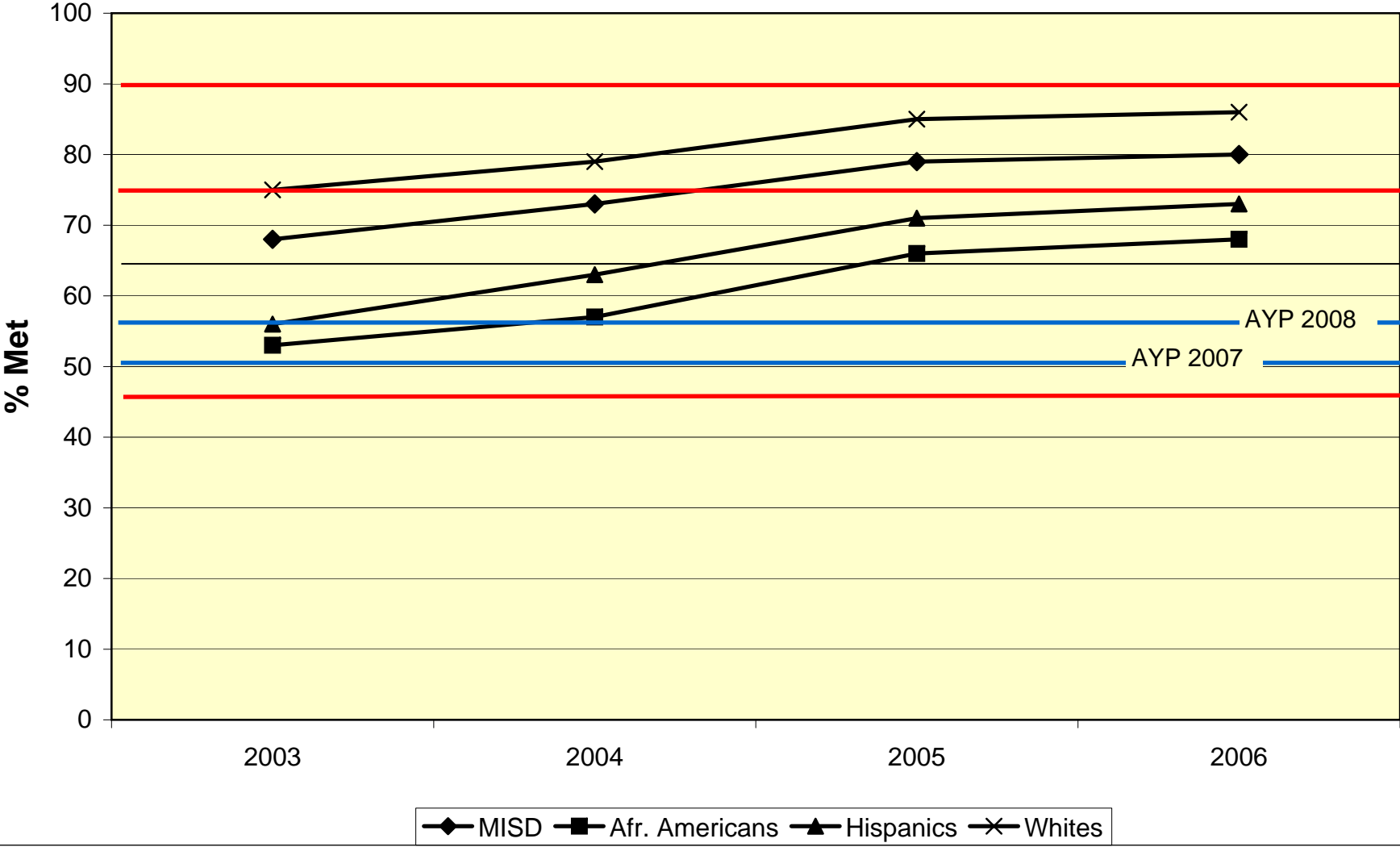
# MISD: Reading/ELA Performance

Red Lines indicate 2007 Standards for Acceptable, Recognized, & Exemplary  
Blue Line indicates 2007 and 2008 AYP Standard



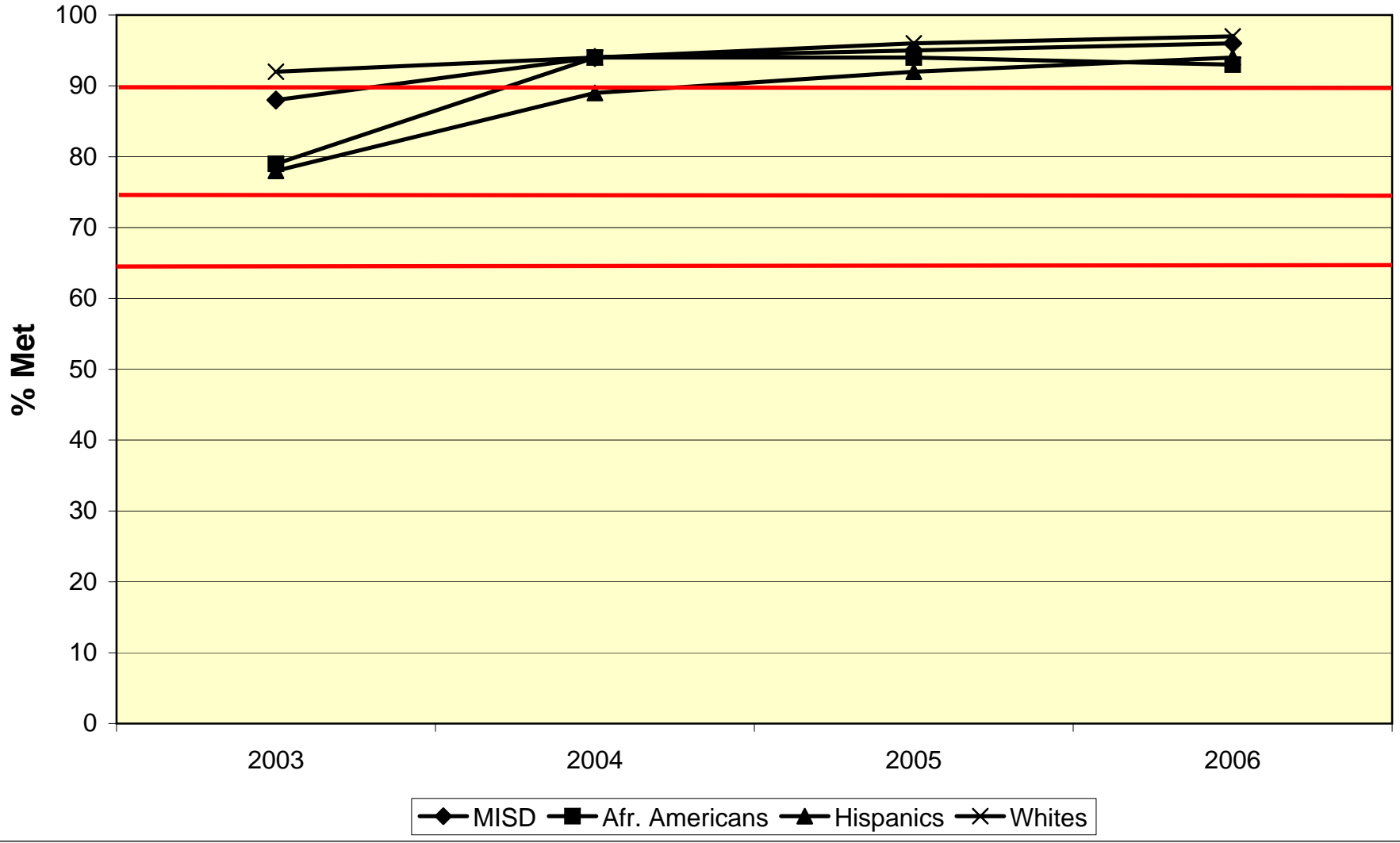
# MISD: Math Performance

Red Lines indicate 2007 Standards for Acceptable, Recognized, & Exemplary  
Blue Lines indicate 2007 and 2008 AYP Standard



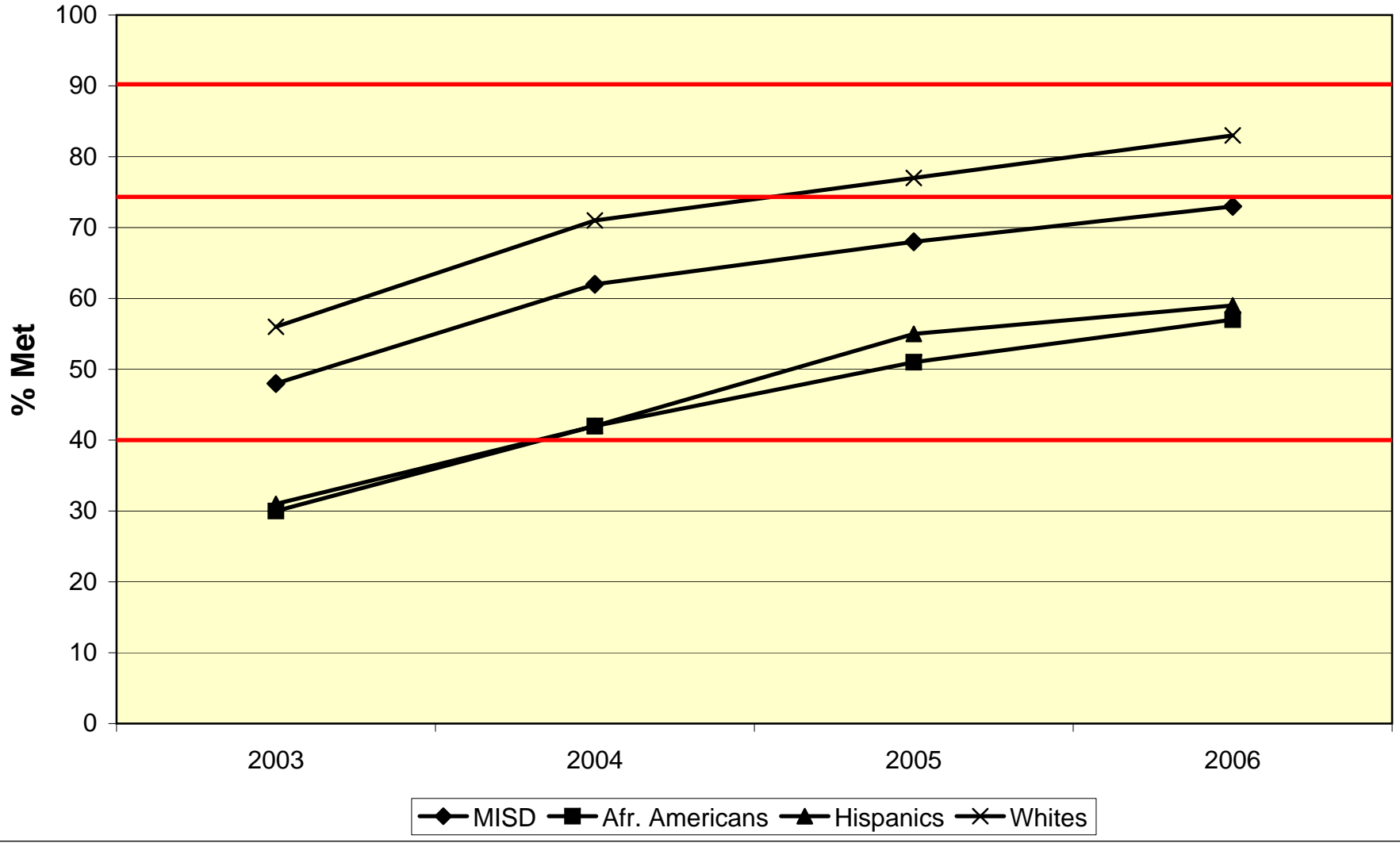
# MISD: Writing Performance

Red Lines indicate 2007 Standards for Acceptable, Recognized, & Exemplary



# MISD: Science Performance

Red Lines indicate 2007 Standards for Acceptable, Recognized, & Exemplary



# MISD: Social Studies Performance

Red Lines indicate 2007 Standards for Acceptable, Recognized, & Exemplary

