

What You Have Access To When You Login

Novell Login

After you turn on your computer you will eventually see the Novell Login screen. This connects you to our Novell Network.

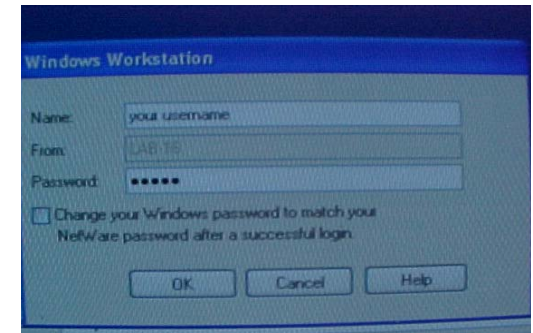
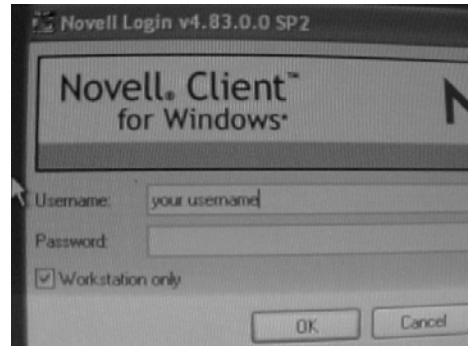
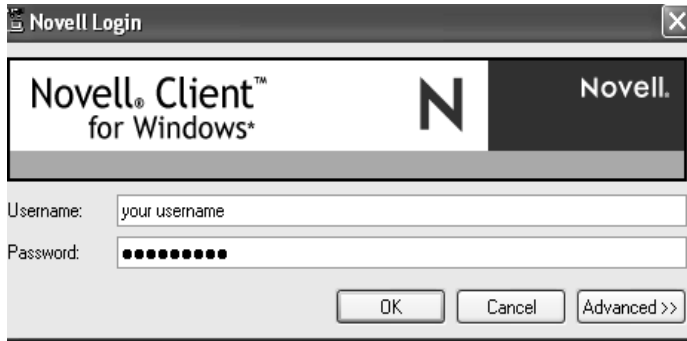
Workstation only login

You can log on to your computer as a "workstation" (notice checkmark in picture) and NOT be logged on to the Novell Network

Windows login

On Windows 2000 and XP machines you also HAVE to log into Windows with your username and password*

*There may be more than one user in Windows on a computer, and each has a different "desktop" with different programs. You must be setup as one of these types of users on Windows 2000 and XP before you can login to Windows and use the computer.



When you Log onto any of these you have access to:

←————— Internet —————→
Desktop GroupWise
Stand Alone Printer
Files & Folders on Your Desktop
Programs on Your Desktop

Only when you Log onto Novell do you have access to:

Network Printers
Network Programs
Folders & Files on Campus server
Login scripts (A function of a network that automatically performs certain tasks)

For more information
please contact your
technology at x4357 or
helpdesk@mansfieldisd.org