

Embedding United Streaming Video

Into OpenOffice

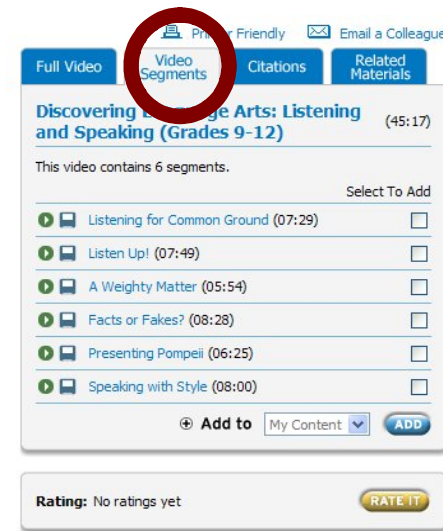
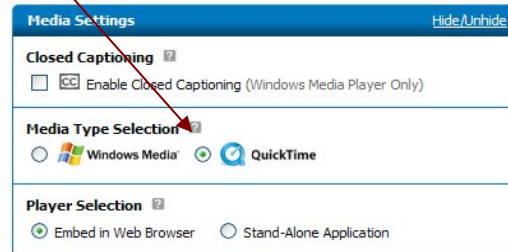
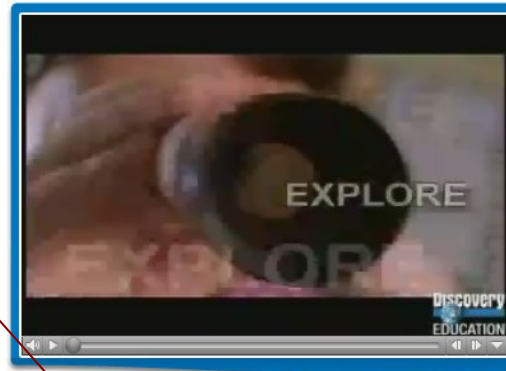
What is embedding? When you embed a downloaded video segment, you are inserting it right into your document.

Reasons to embed to a video:

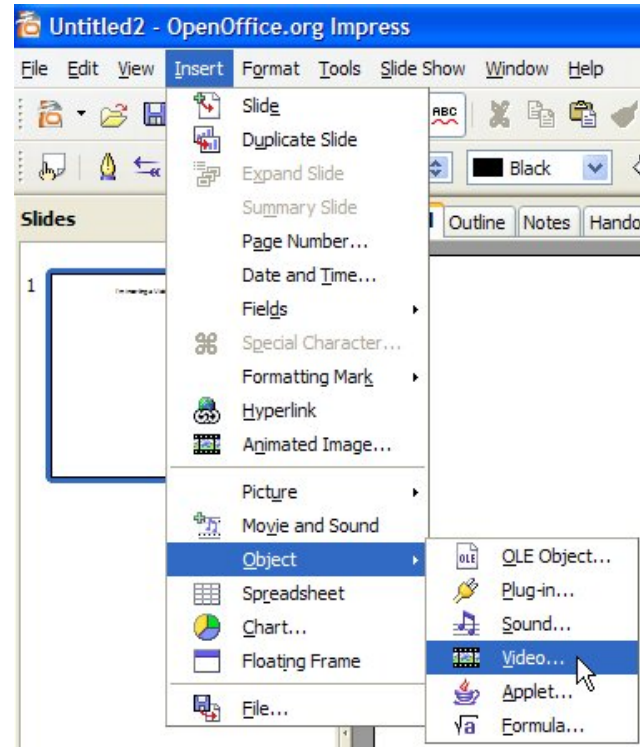
- To have the video play automatically during a presentation.
- To hide the media controls, such as play, pause, stop, and volume.
- To add text boxes and images that serve as visual cues while the video is playing.

How to embed a video into OpenOffice:

1. Find a video segment you want to use.
2. Change Media Type Selection to QUICKTIME.
3. Download a video segment to a designated folder.
4. Create a new slide show document and save it to the same folder.



5. Select the slide within your OpenOffice slide show where you want to embed the video.
6. Go to Insert > Object > Video.
7. Navigate to where you saved the downloaded video and select it.
8. Click “OK”



Decide whether to have the video play automatically or not.

9. RIGHT click & select Plug-In Settings.
10. Select the Browser tab.

To play the embedded video, go to Slide Show > Slide Show.

