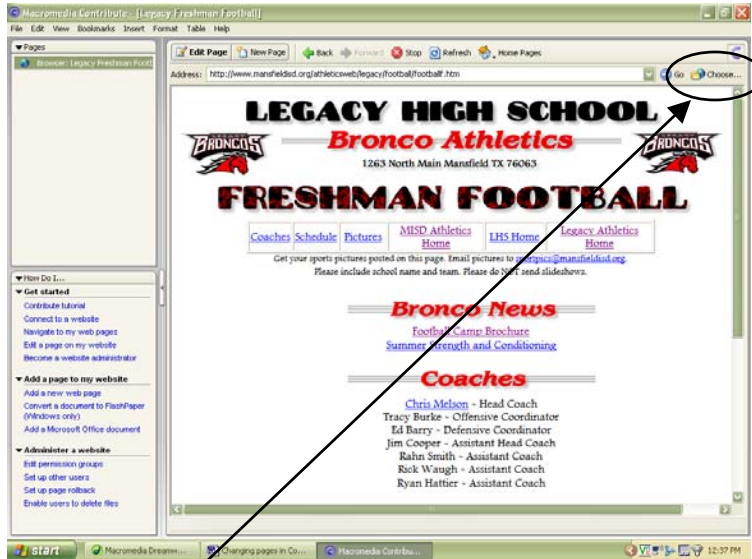


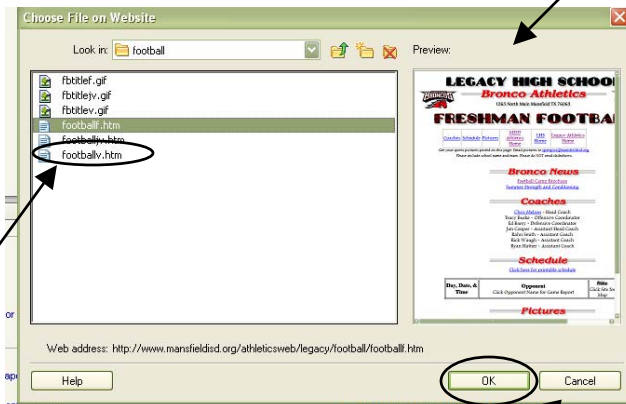
Changing pages in Contribute

How to edit a different page than the one that is displayed when Contribute is opened.

Let's say you have access to all three of the Legacy Football pages (V, JV, F). The freshman page appears when you open Contribute, but you want to edit the Varsity page. You will open Contribute and a page will display like below.



Click the Choose button. A page will come up like below.



Double click on the page you want to edit or highlight the page and hit OK. The page you want to edit will be displayed.